

Can you answer the following questions on your walk?

1. How many trees are there in the Orchard?
2. How many bridges did you cross?
3. What colour is the bird hide?
4. How many awards plaques are there on the side of the Clubhouse? (clue: look at both doors)
5. What animal might be hiding in the river by the shop?
6. What colour flowers did you see on your walk?
7. How many sheds did you see? 0, more than 5 but less than 10, more than 20.

Dorset Road Allotments welcomes you to our award-winning allotment site.

To help maintain and protect the site for the enjoyment of people and wildlife, please:

- deposit litter in bins by the clubhouse
- keep dogs on leads
- do not walk onto allotment plots without being invited – keep to the paths
- do not disturb wildlife

For more information...

Dorset Road Allotments
www.dorsetroadallotments.org.uk

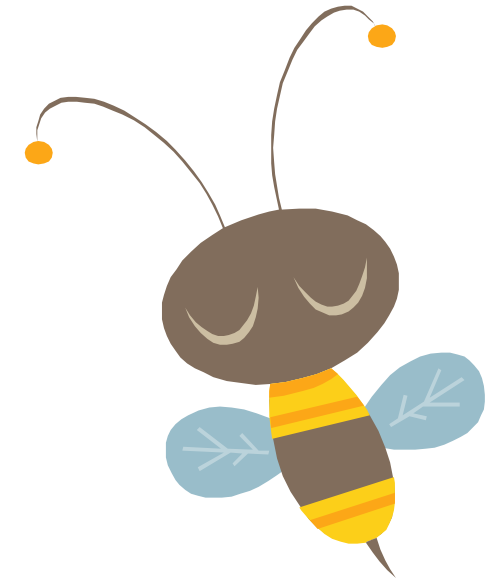
Allotments in Bromley
www.balgf.org.uk

London Borough of Bromley
www.bromley.gov.uk

Allotments
www.nsalg.org.uk

Dorset Road Allotments and Leisure Gardens Trail

... follow the bee



This walk will take about 20-30 minutes

Start

at the bridge near the Shop. Turn left and follow the bee! You will see lots of different types of allotment plots. Which is your favourite?

1. The riverbank is a rich habitat for a wide range of plants and animals. Flowers provide food for butterflies and bees and in late summer the banks are full of berries and seeds which provide food for birds, and insects.

2. The Orchard, native hedges and logpile enhance the environment in this area, providing more habitats for wildlife, both on the trees, logs and in the grassland surrounding the orchard.

3. The Christmas Tree plantation is where Members can harvest Christmas trees.

4. The Arena this area is dominated by a large oak tree which makes it unsuitable for growing. There is a green space for use by the community, an orchard have been planted. The area is surrounded by native hedgerows.

5. The Wildlife garden has native hedges, a wildflower meadow and there are cowslips and bluebells along the river bank. Logpiles and a hibernaculum provide a home for slow worms and other reptiles. The pond plants provide cover for insects and amphibians that live in or around the pond. In summer dragonflies swoop around and ducks have nested on the island. Over 20 species of birds have been spotted.

6. The woodland walk and hazel coppice are grown where on land where it is unsuitable for allotment plots. The hazel trees lining the river are cut back every few years and the wood used around the site. New shoots regrow from the stump but in the meantime woodland flowers such as bluebells flourish. This area provides a rich habitat for plants and animals.

7. Bees are important pollinator, like other insects, are part of a food chain. Honeybees are social insects with on average 30,000 bees living in one hive all supporting the queen in her work. The harvest from honeybees includes honey, pollen, wax and propolis which have nutritional, craft, manufacturing, and medical applications.

As well as the honey bees living in these hives there is also many different types of solitary and honey bee living, feeding and breeding on site.

8. The Secret Garden was designed and built by members (with a little help from landscape contractors) after we won a Bags of Help community award in 2016. It has been designed to be accessible to all members and visitors and has been built using recycled materials.

End at number 9. the Shop, Clubhouse and toilets.

Did you know Nettles are important plants for native wildlife?

Rotting wood may look untidy but it provides shelter and foraging for lots of insects and fungi and birds bats, amphibians.

